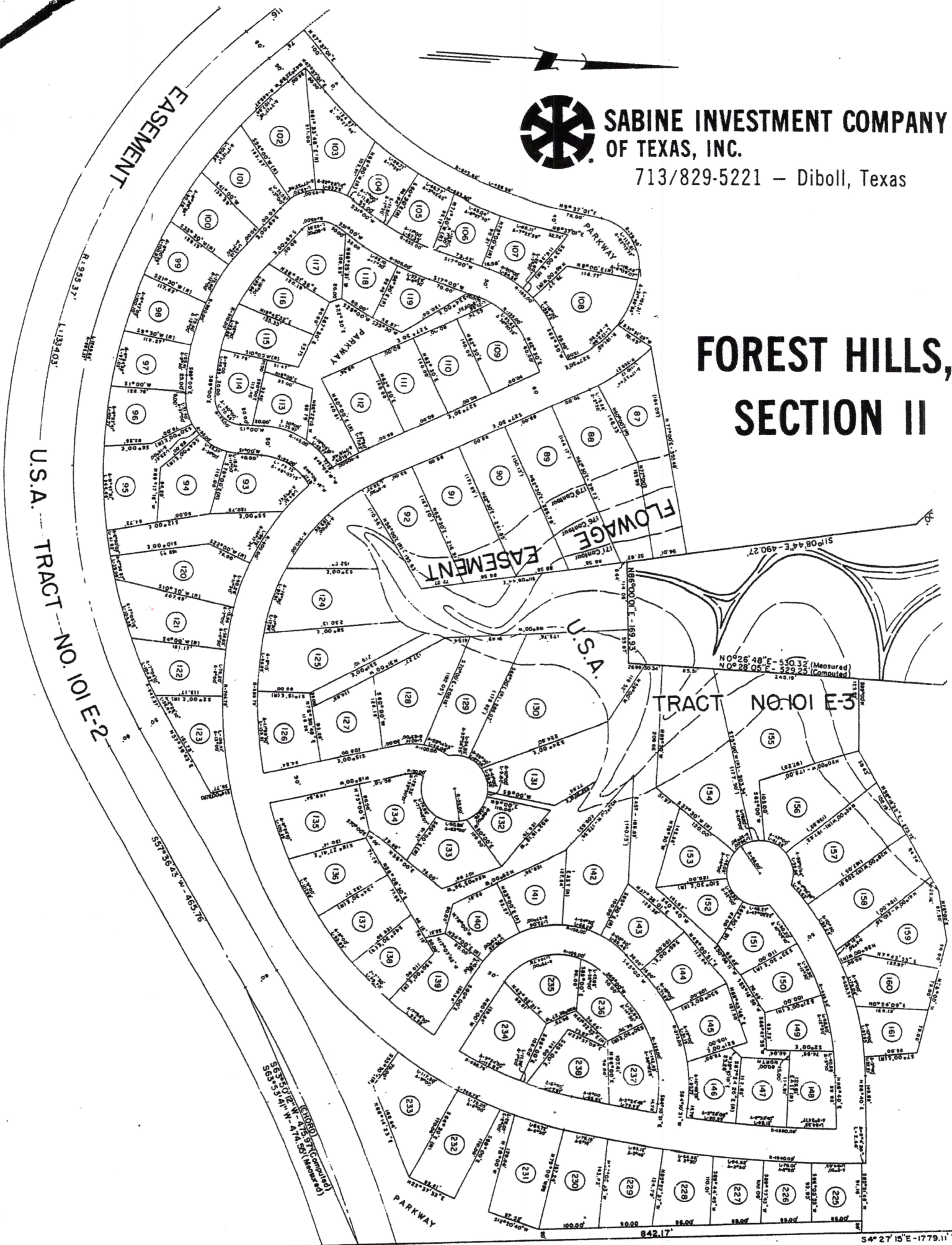




**SABINE INVESTMENT COMPANY
OF TEXAS, INC.**

713/829-5221 — Diboll, Texas

FOREST HILLS, SECTION II

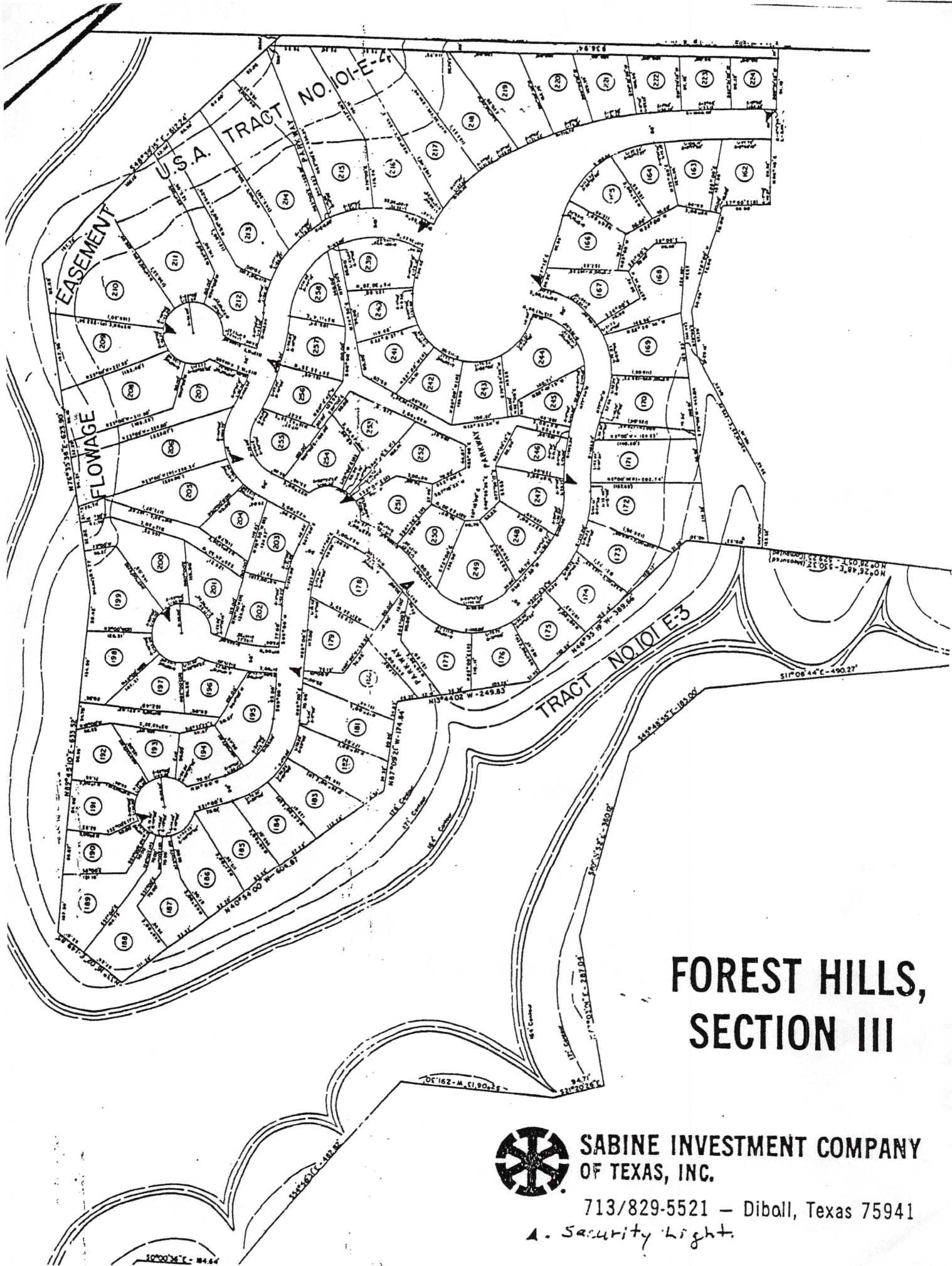


U.S.A. TRACT NO. 101 E-2

U.S.A. TRACT NO. 101 E-3

NO. 28 48' - 530.32' (Measured)
NO. 28 05' - 529.25' (Computed)

842.17' 54° 27' 15" E - 1779.11' To E



FOREST HILLS, SECTION III



**SABINE INVESTMENT COMPANY
OF TEXAS, INC.**

713/829-5521 — Diball, Texas 75941

A. Security Light.